

DRAWING NUMBER  
**52/126**

# THE POLO CLUB OPEN SPACE PLAT ONE

SITUATE IN SECTION 35, TOWNSHIP 46 SOUTH, RANGE 42 EAST  
PALM BEACH COUNTY, FLORIDA.

**126**

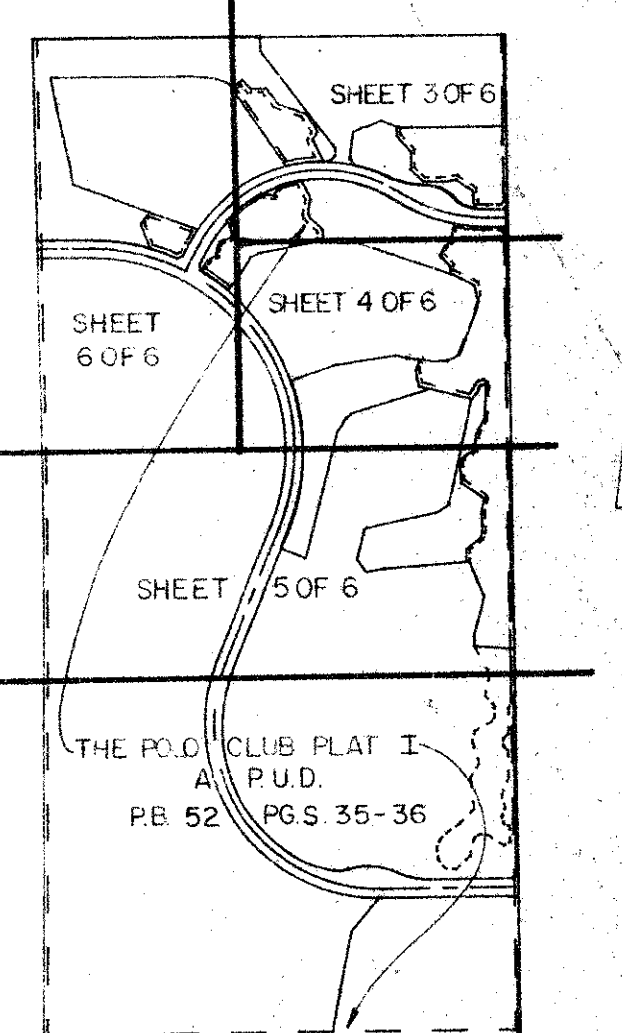
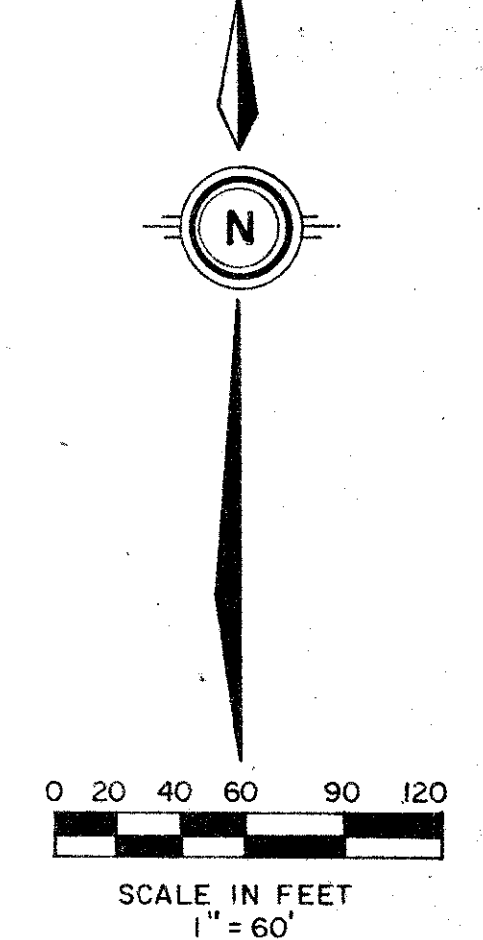
BEING A REPLAT OF A PORTION OF "THE POLO CLUB PLAT I", A P.U.D., AS RECORDED  
IN PLAT BOOK 52, PAGES 35 - 36.

JULY, 1985

L.W.D.D. L-36 CANAL R/W  
(O.R.S. 4239, PG. 552)

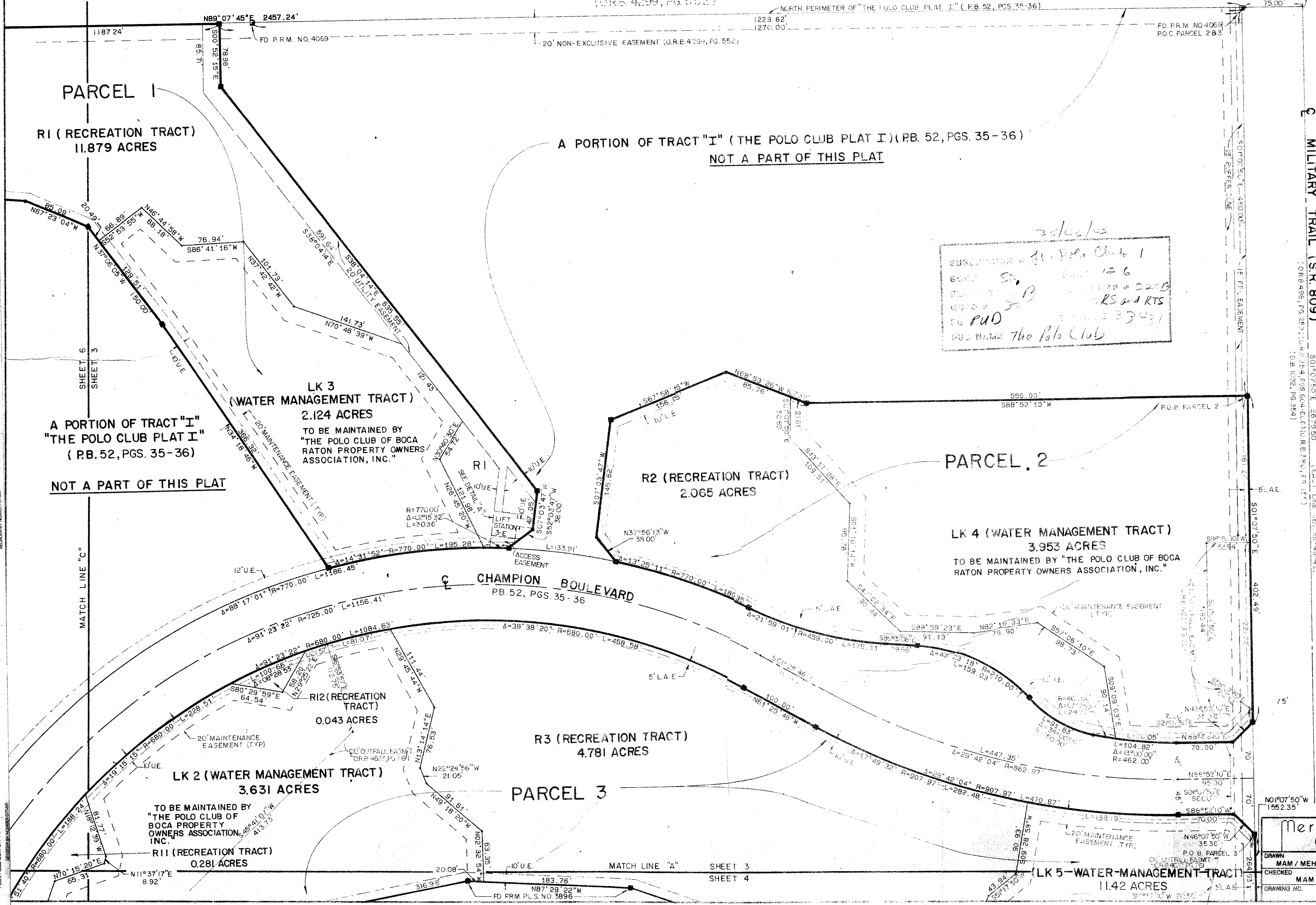
SHEET 3 OF 6

STATE OF FLORIDA  
COUNTY OF PALM BEACH  
THIS PLAT WAS FILED FOR  
RECORD  
THIS \_\_\_\_\_ DAY OF \_\_\_\_\_  
AD, 1985 AND DULY RECORDED  
IN PLAT BOOK \_\_\_\_\_ ON PAGES  
\_\_\_\_\_ AND \_\_\_\_\_  
JOHN B. DUNKLE, CLERK  
BY: \_\_\_\_\_, D.C.



**0436-303**

**52/126**



DRAWING NUMBER

DRAWING NUMBER

DRAWING NUMBER

PLAN HOLD CORPORATION • IRVINE, CALIFORNIA  
REGISTERED NUMBER 07354

Meridian Surveying and Mapping, Inc.  
DRAWN MAM / MEH DATE JULY, 1985  
CHECKED MAM SCALE 1" = 60'  
DRAWING NO. 85-P-058